

GET YOUR  
“NEXTPERTISE™”

ON

NEXTGEN | UGM  
HEALTHCARE

## Presenter(s):

Catherine Magnall – Dir., Prof. Services  
Andy Riedel – Assoc. Dir., Fed. Initiatives  
Dr. James Lasaponara, DDS - Clinical  
Advisor & Consultant

## Topic

Meaningful Use

## Level

Monday, November 12 – 3:00PM to 4:15PM

# Things our lawyers make us say...

Neither NextGen Healthcare nor any presenter at the Users Group Meeting is engaged in rendering legal or other professional advice and this presentation is not a substitute for the advice of your attorney, accountant and/or other professional advisor.

# Session Guidelines

- Turn off all cell phones & pagers
- Questions will be addressed at the end of the presentation
- Refrain from personal discussion

# Agenda

- Meaningful Use 101 – Basic summary
- Dental Certification – What does this mean to me?
- FAQs – questions we're hearing
- Q&A

# Meaningful Use 101

# MU 101

- HITECH provisions of the American Recovery and Reinvestment Act of 2009 (ARRA):
  - Established *CMS EHR Incentive Programs*
  - Introduced concept of “meaningful use” of certified EHR technology
  - Identified two types of eligible providers - eligible professionals (EPs) and eligible hospitals (EHs)
- Meaningful Use (MU) broadly aimed at three areas:
  - Use of certified EHR in a meaningful manner (e.g., e-prescribing)
  - Use of certified EHR technology for electronic exchange of health information
  - Reporting of clinical quality measures (CQMs)
- Stage 2 Final Rule release August 2012, to be implemented in 2014

# Meaningful Use Goals

## Vision

Enable significant and measurable improvements in population health through a transformed healthcare delivery system.

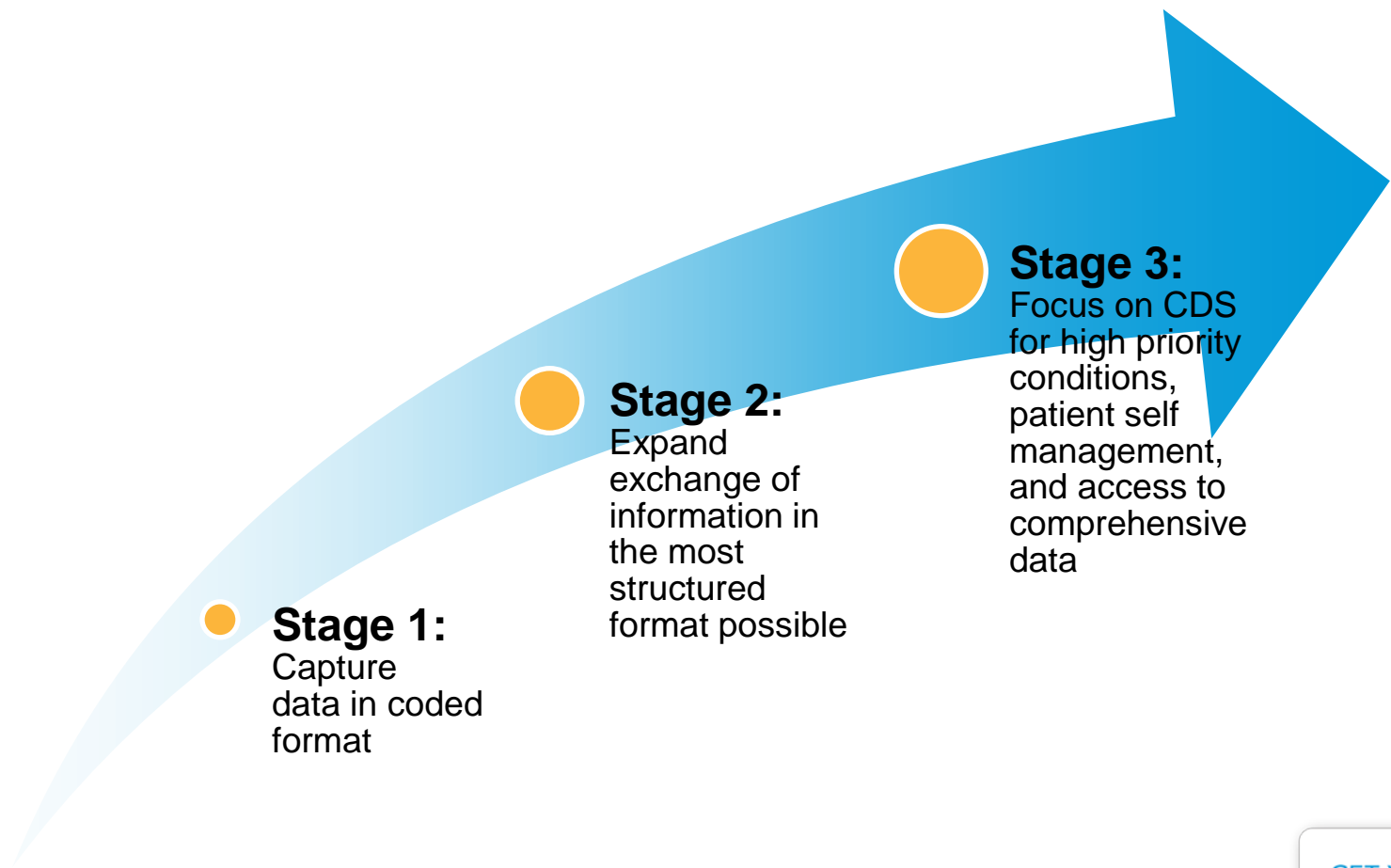
- Improve quality, safety, and efficiency
- Engage patients and their families
- Improve care coordination
- Improve population and public health
- Ensure privacy and security protections

\*Source: Health IT Policy Committee Meaningful Use Workgroup's June 23, 2009 presentation



# Health IT-Enabled Health Reform

## A Phased, Incremental Approach



**Stage 1:**  
Capture  
data in coded  
format

**Stage 2:**  
Expand  
exchange of  
information in  
the most  
structured  
format possible

**Stage 3:**  
Focus on CDS  
for high priority  
conditions,  
patient self  
management,  
and access to  
comprehensive  
data

# Medicaid EP Overview

- Attestation opens state by state
- Physicians, dentists, CNMs, NPs, PAs (RHC or FQHC led by PA)
- 30% by volume Medicaid
- Six year program through 2021
- Maximum \$63,750
- Front loaded- 1<sup>st</sup> year \$21,250, following years \$8,500
- No MU reporting first year – just AIU attestation (adopt, implement, or upgrade)
- Can receive eRx bonus, PQRS and EHR incentives

# Medicaid EHR Incentive Program

| First Year | Medicaid EHR Payments (EPs) |          |          |          |          |          |         |         |         |         |         | Total    |
|------------|-----------------------------|----------|----------|----------|----------|----------|---------|---------|---------|---------|---------|----------|
|            | 2011                        | 2012     | 2013     | 2014     | 2015     | 2016     | 2017    | 2018    | 2019    | 2020    | 2021    |          |
| 2011       | \$21,250                    | \$8,500  | \$8,500  | \$8,500  | \$8,500  | \$8,500  | -       | -       | -       | -       | -       | \$63,750 |
| 2012       |                             | \$21,250 | \$8,500  | \$8,500  | \$8,500  | \$8,500  | \$8,500 | -       | -       | -       | -       | \$63,750 |
| 2013       |                             |          | \$21,250 | \$8,500  | \$8,500  | \$8,500  | \$8,500 | \$8,500 | -       | -       | -       | \$63,750 |
| 2014       |                             |          |          | \$21,250 | \$8,500  | \$8,500  | \$8,500 | \$8,500 | \$8,500 | -       | -       | \$63,750 |
| 2015       |                             |          |          |          | \$21,250 | \$8,500  | \$8,500 | \$8,500 | \$8,500 | \$8,500 | -       | \$63,750 |
| 2016       |                             |          |          |          |          | \$21,250 | \$8,500 | \$8,500 | \$8,500 | \$8,500 | \$8,500 | \$63,750 |



# Stages of Meaningful Use

| 1 <sup>st</sup> Year | Stage of Meaningful Use |      |      |      |      |      |      |      |      |      |      |
|----------------------|-------------------------|------|------|------|------|------|------|------|------|------|------|
|                      | 2011                    | 2012 | 2013 | 2014 | 2015 | 2016 | 2017 | 2018 | 2019 | 2020 | 2021 |
| 2011                 | 1                       | 1    | 1    | 2    | 2    | 3    | 3    | TBD  | TBD  | TBD  | TBD  |
| 2012                 |                         | 1    | 1    | 2    | 2    | 3    | 3    | TBD  | TBD  | TBD  | TBD  |
| 2013                 |                         |      | 1    | 1    | 2    | 2    | 3    | 3    | TBD  | TBD  | TBD  |
| 2014                 |                         |      |      | 1    | 1    | 2    | 2    | 3    | 3    | TBD  | TBD  |
| 2015                 |                         |      |      |      | 1    | 1    | 2    | 2    | 3    | 3    | TBD  |
| 2016                 |                         |      |      |      |      | 1    | 1    | 2    | 2    | 3    | 3    |
| 2017                 |                         |      |      |      |      |      | 1    | 1    | 2    | 2    | 3    |

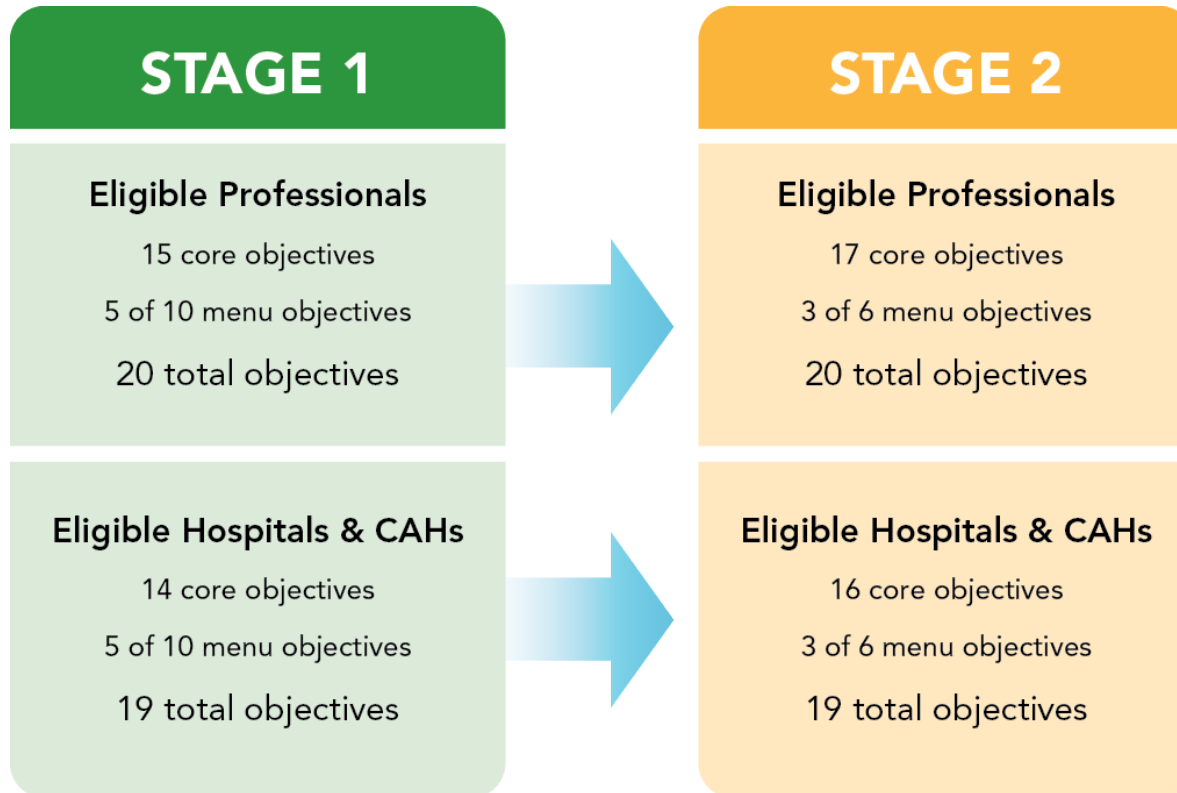
<http://www.cms.gov/EHRIncentivePrograms/>

# Stage 1 Meaningful Use

- EP must successfully perform **20 out of 25 “functional” objectives**
- Some measures are yes/no attestation only, others require submission of numerator/denominator data
- Measures divided into:
  - Core (15) – EP must do all 15 but there are some exclusions
  - Menu (10) – EP chooses 5, one must be one of the public health objectives
- One of the 15 Core measures is to report on 6 Clinical Quality Measures (CQMs)
  - Three (3) Core CQMs must be met
  - Three additional CQMs must be met (EP’s choice)
- NextGen Healthcare uses:
  - “MU Crystal Reports” for reporting measures associated with Core and Menu functional objectives
  - NextGen HQM solution for reporting the CQMs

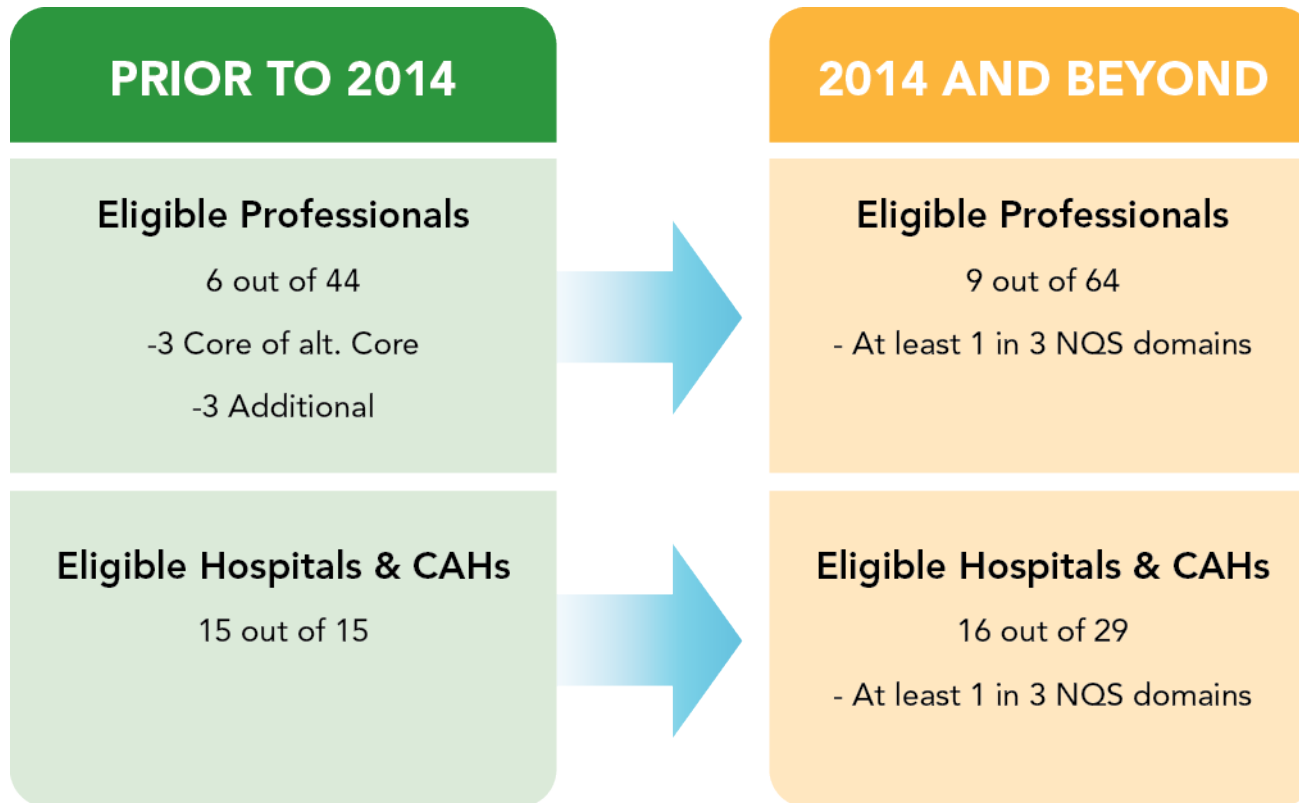
# Core/Menu Structure

## MU Stage 1 vs. Stage 2



- Reporting remains based on attestation
- Group/batch attestation submissions allowed beginning in 2014

# MU Stage 2 – Clinical Quality Measures



# Dental Certification



# Certification of Dental Solutions

## Currently certified:

- **NextGen® EDR, version 4.2, 4.3**

NextGen EDR version 4.2 and 4.3 were certified as an ONC-ATCB Complete EHR on May 9, 2012 and complies with all clinical quality measures for Eligible Providers. **The additional software NextGen EDR version 4.2 or higher relied upon to demonstrate compliance includes NextGen Ambulatory EHR, v5.6 SP1 or higher.**



## Future certifications:

- **QSIDental CPS**
- **QSIDental Web**

# FAQs and Getting Started

# FAQs

- Q: What does a provider have to do in meet MU objectives
- A: All objectives are met and measured and reporting on these areas starts in year two of Stage 1.
  
- Q: Who benefits from the MU certification and is it helpful to standalone dental practices?
- A: Any Eligible professional that qualifies for MU Incentives who have 30% Medicaid patient visits.
  
- Q: Are part-time providers eligible and if so what are the minimum number of hours a provider must work in the clinic?
- A: There are no time requirements, but 50 percent or more of an EP's patient encounters during a given Reporting Period must occur at a practice/location equipped with certified technology. The EP may meet the 50 percent threshold through a combination of practices or locations, as long as each one is equipped with a certified product.

# FAQs

- Q: What is the plan for certification of QSIDental CPS and QSIDental Web solutions?
- A: QSIDental plans to certify both CPS and QSIDental Web next year with general release availability projected to be the end of 2013.
- Where can I get more information about about the Meaningful Use Incentive Program?
- CMS “MU homepage”  
<http://cms.gov/EHRIncentivePrograms/>

Any Questions?